



LED EDGE LITE-Single Color
LBU-200-12V

LED EDGE LITE

LED EDGE LITE is an innovative solution for sign illumination. With the latest LED technology, 4-pin LED as light source, LED EDGE LITE is your best choice for acrylic sign illumination. The unit length of LED EDGE LIGHT is only 88mm, with female and male connectors at the end of each unit length, you can the LED EDGE LITE easily. This LED EDGE LITE can be used in hotel, window display, bars, disco halls and so on.

Features:

- 1: 12V low voltage; safe to use.
- 2: slim, delicate, and super bright
- 3: low consumption, energy saving
- 4: Long life span
- 5: enable to be extended in series at you option, very convenient to installation and maintaining.



LED EDGE LITE-RGB
AS-103x15-RGB-12V



Specifications:

Item No.:	LBU-200-12V
Size (mm):	200X14mm
Voltage:	12V DC
Watts:	1.2W
Amp:	100mA/ PCB
Type of LED:	Ø5/ Piranha
Max. PCBs:	16PCS (with 12V 2A Switch Power)

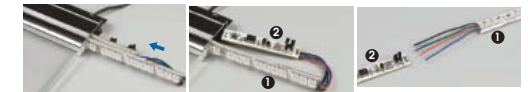


Product details are subject to changes of appearance and specifications without notice, please refer to the real entity.



How to use:

RGB Color Change Type



- ① AS-103X15-RGB-12V
- ② AS-80X15-12V(controller)



Note:

Please make sure the connecting pin is well connected.

Single Color Type



Specification:

Item No.:	AS-103X15-RGB-12V
Size (mm):	103X15mm
Voltage:	12V DC
Watts:	0.72W/ PCB
Amp:	60mA
NO. of LED:	10/ PCB
Max. Length :	26PCS (with 12V 2A Switch Power)
Controller Size (mm):	80X15mm
Controller Item No.:	AS-80x15-12V